

Rocky Mountain Chain



Fabric Requirements for a 10" Finished Rocky Mountain Chain Quilt Block:

- Light/White: 4 - 3" squares, 8 - 1.5" x 2.5" rectangles, and 16 - 1.5" squares
- Medium/Orange: 4 - 3" squares
- Medium/Blue: 5 - 2.5" squares
- Dark/Navy: 8 - 2.5" squares

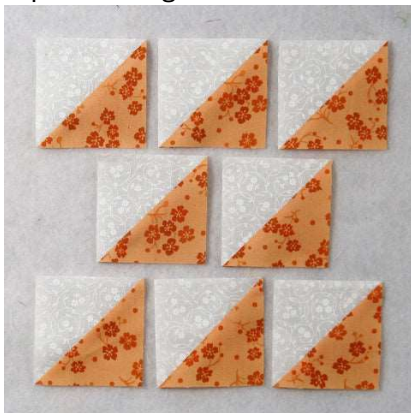


Sewing Directions:

Half Square Triangle Units:

Step 1:

Using the Light/White 3" squares and the Medium/Orange 3" squares, piece together eight Half Square Triangles like the ones in the picture below. Trim/square up to 2.5" squares.



Square in a Square Units:

Step 2:

Using four of the Dark/Navy 2.5" squares and the 16 Light/White 1.5" squares, sew together four Square in a Square patches as shown in the picture below. I know these are small, but just take your time and they'll turn out great!



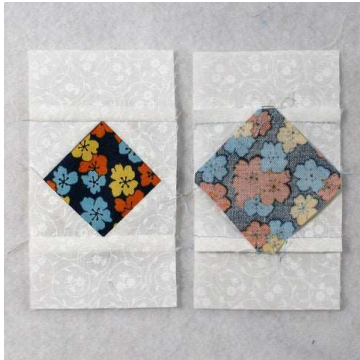
Step 3:

Lay out one of the Step 2 Square in a Square patches and two of the Light/White 1.5" x 2.5" rectangles as shown below.



Step 4:

Sew the two Light/White 1.5" x 2.5" rectangles to the Square in a Square patch and press the seam allowance toward the rectangle as shown in the picture below. **Repeat Steps 3 and 4 for a total of four Square in a Square units.**



Corner Units:

Step 5:

Lay out two Half Square Triangle units, one Medium/Blue 2.5" square, and one Dark/Navy 2.5" square as shown in the picture below. The Corner unit goes together like a typical [Four Patch](#) block.



Step 6:

Sew the patches into two rows and press the seam allowances away from the Half Square Triangle units as shown below.



Step 7:

Now sew the two rows together and press the seam allowances. You can see in the picture below that I used the tweak/twirl/furl method for pressing the seam allowances, but you can press however you prefer. **Repeat Steps 5 through 7 for a total of four Corner units.**



Putting It All Together:

Step 8:

Lay out the Square in a Square units, the Corner units, and a Medium/Blue 2.5" square as shown in the picture below.



Step 9:

All that's left is to sew the units together like a uneven [Nine Patch](#). Sew the units into three rows as shown below.



Step 10:

Press the seam allowances away from the Square in a Square units as shown below.



Step 11:

Almost done! Sew the three rows together - and...



Step 12:

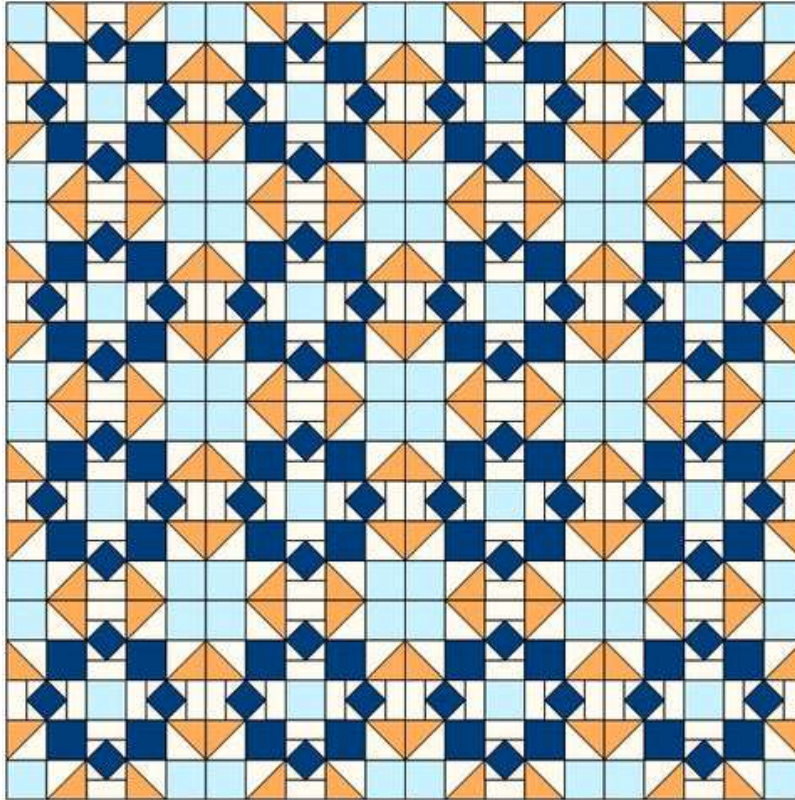
Press the seam allowances toward the center of the block as shown in the picture below.



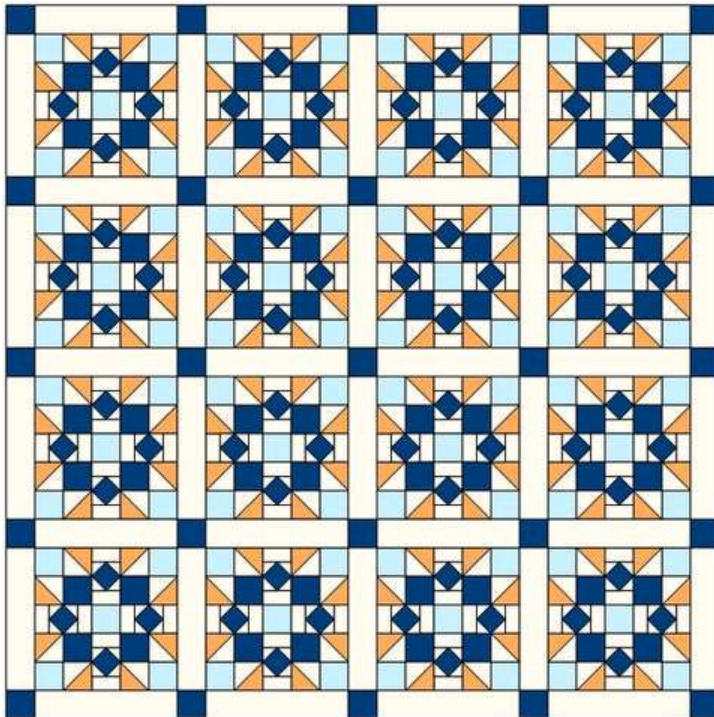
Final Quilt Layout options:

This block was fun to piece together! While it has a some small pieces, the piecing isn't difficult and produces a complex-looking block.

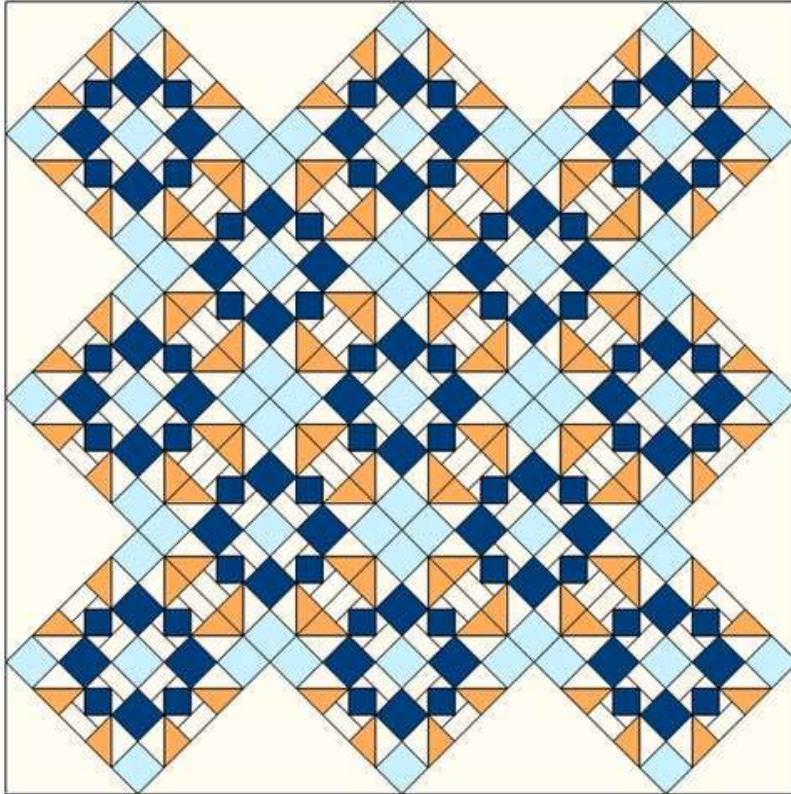
Here's just a plain Jane 4 x 4 layout. I do like the way it looks in a quilt.



Here's how it looks with a simple sashing and cornerstone layout. Each block shines on its own in this type of layout.



And here's a basic on-point layout. I think if the setting triangles continued the Medium/Orange triangles, it would look better.



And here we have on-point with sashing and cornerstones. In this example, I used a 1" wide sashing and I like it better than the 2" in the other example above.

